



# **LVR Youth Soccer Club House League Handbook**

*2018*

## **APPROACH**

The LVR House League is designed for the early / beginner soccer player, typically a first to third grader. Teams play exclusively against other teams within the club, at a single location. At this stage, having fun, making new friends, learning about the game of soccer and developing skills are all that is important.

To this end: the rules of the game are relaxed and changed to ease a player's introduction to soccer. A summary of the Small Sided or Modified ("Mod") soccer format can be found below. LVR-specific rules are also included below.

- Coaches **MUST** give every player equal playing time
- Coaches **MUST NOT** keep score or track goals
- LVR will not keep win/loss records

## **SPORTSMANSHIP AND FIELD COORDINATORS (a.k.a. Referees)**

Coaches should strive to exemplify the highest levels of sportsmanship. It is their responsibility to ensure that they and all players, parents, and spectators on their side of the field conduct themselves in a respectful and supportive manner. No derogatory or negative comments should be directed to the opposing team or their supporters.

Our House League field coordinators (referees) are young and learning the difficult skill of managing a game where emotions can run high. As such, all club members are expected to support them to the highest degree possible. **ABSOLUTELY NO DISAGREEMENT WITH OR DISPARAGING REMARKS TO THE COORDINATOR WILL BE TOLERATED**, no matter how 'wrong' a call may seem to be.

## **GAMES**

LVR House League games are played at Eckstein Middle School (3003 NE 75<sup>th</sup> Street). Each team is provided some basic equipment (cones and "woz" markers) to facilitate in marking out their game field. See the following pages for the field layout specific to each age group.

Our club has experienced growth over the past several years, particularly the House League program, which now boasts about 750 players. We remain committed to providing an opportunity for as many children to play as possible.

**Please note:** The match-day goals are kept in the locked gated area at the NE corner of Eckstein Field. Coaches should help placing the goals at the beginning of the day and returning them to the gated area at the end of the day. This means if you are the first games on the field, place the goals; if you are the last games on the field, please return them inside the gate. Your diligence is greatly appreciated.

Members will be scheduled to play at various times on either Saturday or Sunday. Tentative game times for this year:

### SATURDAY

09:00 AM – GU7

10:30 AM – GU7 and BU7

12:00 PM – BU7

01:30 PM – BU7 and GU8

03:00 PM – GU8 and BU8

04:30 PM – BU8

### SUNDAY

11:00 AM – GU9

12:30 PM – GU9

02:00 PM – BU9

03:30 PM – BU9

### **PRACTICES**

Each House League age group and gender is assigned a specific day to practice at Eckstein. You are not required to use this assigned day and field, but you are on your own to find a different practice location if you so choose. If you chose to practice at Eckstein field, please practice only on the allotted date for your age-group and gender. For example, U8-Boys should only practice Sunday afternoons at Eckstein this season.

Please note that it is up to the coaches to set the practice schedules—the club does not track when and where each team is actually practicing. Typically, 1 hour-long practice per week is sufficient for House League teams. Starting in September, assigned practice times are from 5:30 PM until dusk, as Eckstein School has the field reserved until 5:30 PM with the new school bell times. The field might be available a bit earlier depending on the day of the week and whether school is in session.

Practice days:

Mondays – Girls U-07

Tuesdays – Boys U-07

Wednesdays – Girls U-09

Thursdays – Boys U-09

Fridays – Boys U-08

Sundays – Girls U-08 after 4:30pm

## LVR HOUSE LEAGUE RULES

The purpose of the house league is for young players to learn the game of soccer while having fun. Competition is of lesser importance than is gaining skill, knowledge, and enjoyment of the game. The house league is for players less than 10 years old. Teams of no more than 7, 8, or 9 players are formed in each one-year age bracket (U7, U8, and U9 respectively) as determined by how old a player is on July 31 of the current year (i.e. a child who has already had his / her 8<sup>th</sup> birthday by July 31 will be on a U9 team).

FIFA laws as modified below govern the rules by which house league games are played.

1. U-7 and U-8 games are played with a size 3 ball. U-9 games are played with a size 4 ball.
2. U7 play 4-a-side, no goalie, 30x25 yard field, 4x8 foot goals, 20-minute halves.
3. U8 plays 5-a-side, with and including goalie, 40x25 yard field, 4x8 foot goals, 25-minute halves.
4. U9 plays 6-a-side, with and including goalie, 55x35 yard field, 6x12 foot goals, 25-minute halves.
5. Substitutions are unlimited and may be made at any time.
6. All players should play about an equal amount of time every game.
7. Goalkeepers may use their hands only within the 5-yard goal area.
8. Unlimited steps are allowed for the goalkeeper.
9. No offside law; however, coaches should discourage their players from camping-out in front of the opponent's goal. Field Coordinators / Referees should point this out to coaches as-needed.
10. The nine major fouls (kicking, tripping, jumping at an opponent, charging an opponent violently or from behind, striking, holding, or pushing an opponent with hands or arms and handling the ball) will be called and explained by the Field Coordinator and an indirect free kick awarded (there are no direct kicks or penalty kicks).
11. A throw-in will be awarded to the team opposite that which last touched the ball before it crossed a touchline. The referee will allow an improper throw-in to be retaken by the thrower, after explaining the correct method.
12. All kicked restarts (goal kicks, corner kicks, and indirect free kicks) will be taken with all the opposing players at least 5 yards from the ball. The kicker may not touch the ball a second time until some other player has touched it. Goal kicks may be taken from anywhere within the 5 yard goal area.
13. Goals cannot be scored directly from a goal kick, throw-in, or any free kick (i.e. two players, attacking or defending, must touch the ball). Fouls committed on an attacking player within the goal area will be penalized with an indirect free kick to be taken from a point no closer than 5 yards from the goal line.
14. Field Coordinators are instructed to watch for dangerous type play (kicking wildly, falling down in the middle of a group of kicking players, etc.) and stop play, explain the situation, and restart with an indirect free kick.
15. Coaches are instructed to use substitutions and immediate conferences to control rough play.

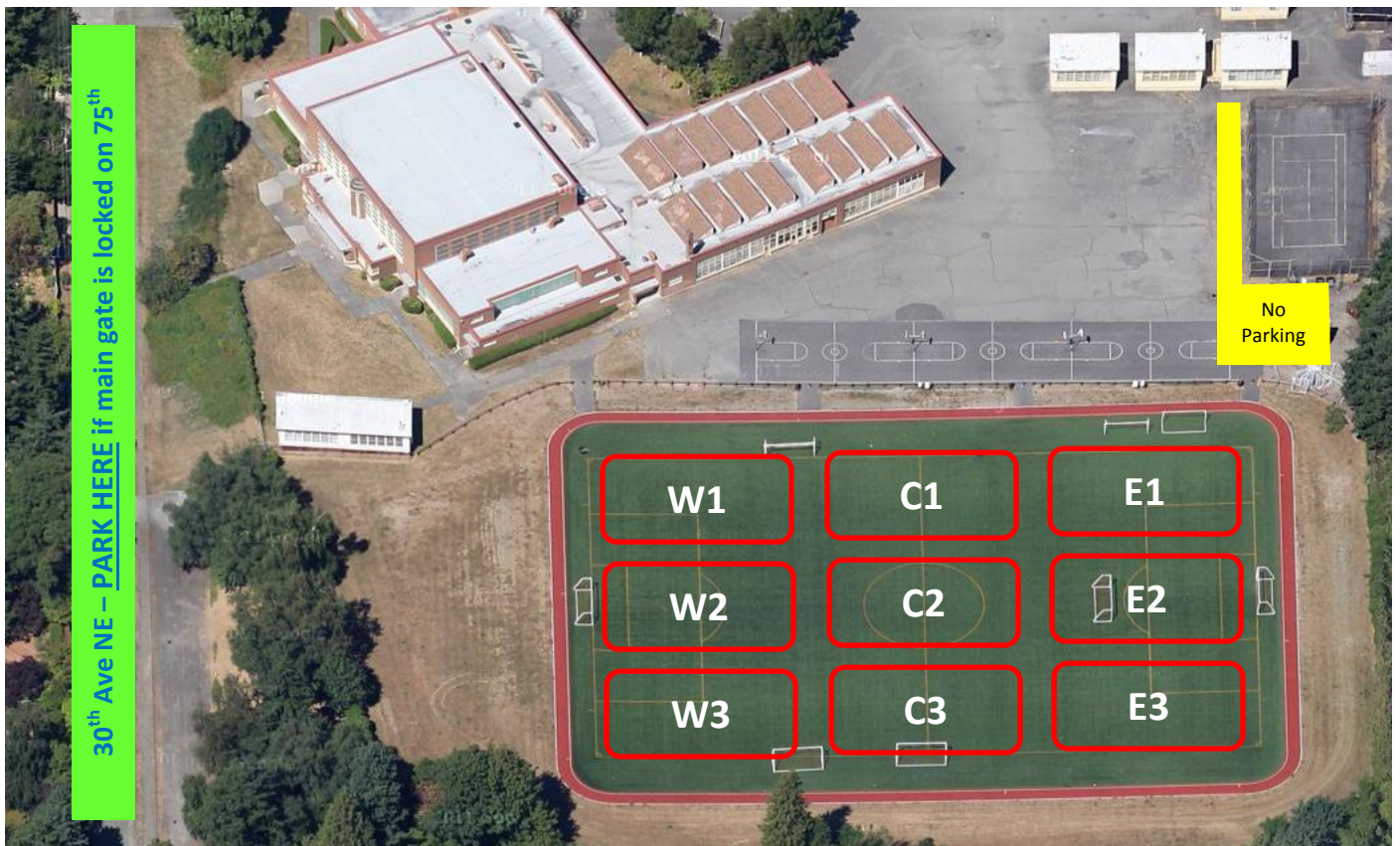
**It is the coach's responsibility to insure that he / she and all players, parents, and spectators on his / her side of the field conduct themselves in a respectful and supportive manner. No derogatory or negative comments should be directed to the Field Coordinator, the opposing team, or their supporters. And absolutely no disagreement with the Field Coordinators will be tolerated; no matter how "wrong" a call may seem to be.**

## EQUIPMENT DISTRIBUTION

Each player receives a new jersey each year. Additionally, coaches receive twelve 2" disc cones (to mark the boundaries and the 5 yard goalie area); four 9" corner cones; and one equipment bag when they start coaching. If you need replacement equipment, please contact LVR's equipment and uniform manager at [uniforms@lvr-soccer.org](mailto:uniforms@lvr-soccer.org). LVR does not provide practice goals. The match-day goals stored at Eckstein are only used on Saturday and Sundays.

Coaches must bring their corner cones and disc cones to all house league games in order to adequately mark the fields. You may also find the equipment helpful to use at practice. You can keep this equipment until you leave LVR coaching. If another coach takes over your team, please pass the equipment on to that coach. You can also return the equipment to LVR by contacting the club at [uniforms@lvr-soccer.org](mailto:uniforms@lvr-soccer.org) and arrangements will be made.

## FIELD LAYOUT FOR U7 AND U8



**Address: 3003 NE 75<sup>th</sup> Street**

**Parking is located on 30<sup>th</sup> Ave NE if main gate on 75<sup>th</sup> is locked (west of the school).**

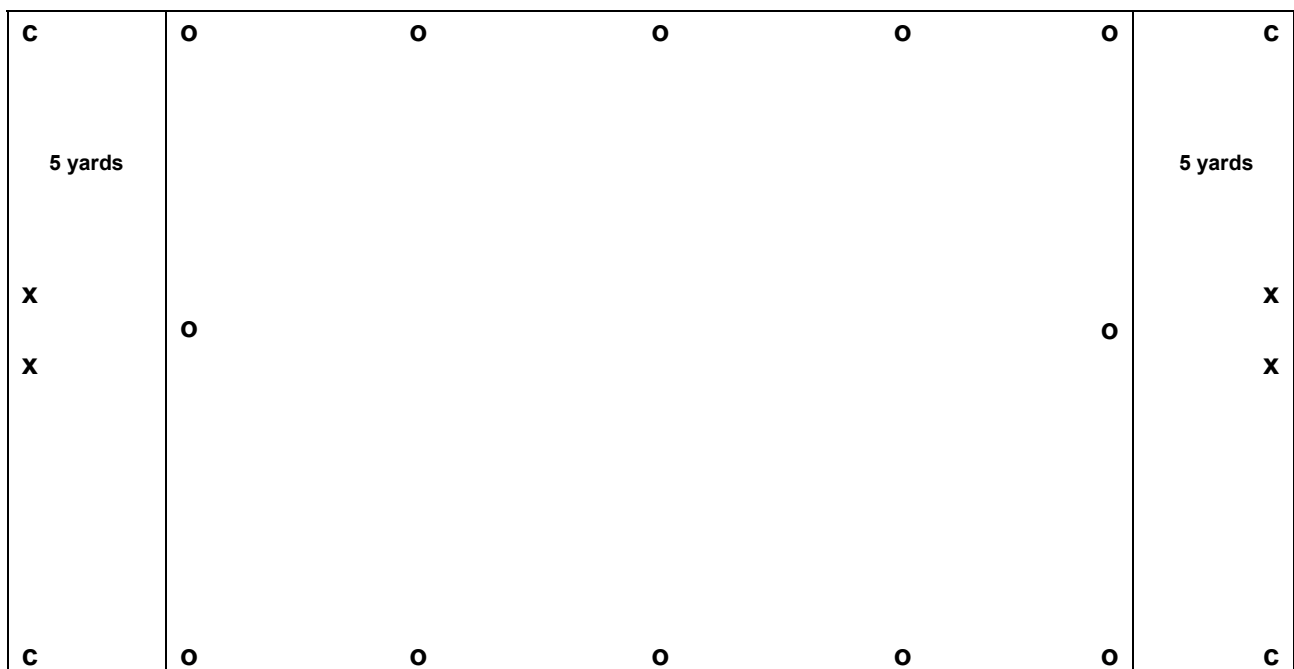
- Playfields are labeled West, Center and East, from the north side (1) to the side south (3) of the field.
- Please place goals in the general area of each playfield (red rectangles) shown in the picture above.

Field sizes are listed on Page 3. One yard is roughly equal to an adult's long walking stride.

- Game days mean a crowded parking lot: in order to assist traffic flow and emergency access, please communicate to your teams to not park in the areas directly adjacent to the fenced tennis court (shaded / yellow area in the picture above which surrounds where the goals are stored).
- Be mindful of the red striped fire access lane through the parking lot. Do not block or park in this lane.

**Please note:** The goals are kept in the locked gated area at the NE corner of Eckstein Field. Coaches are responsible for collecting and placing the goals at the beginning of the day and returning them to the gated area at the end of the day. This means if you are the first games on the field, place the goals; if you are the last games on the field, please stack them inside the gate. Your diligence is greatly appreciated.

Suggested deployment of goals and cones (for U-7 there is no goalie box):



**x = goal**

**c = 9" corner cone** (these may be used to mark the sides of the goal if there are no goals available)

**o = 2" disc cone**

Please note that the U9 program field will be larger. There will be 4 fields set up on the entire Eckstein field - roughly 55 x 35.

Thank you and have a fun season!

Questions? Please contact: [House@lvr-soccer.org](mailto:House@lvr-soccer.org)